

OLIVE BRANCH LOGISTICS CENTER BUILDING E

LAND/
BUILD TO SUIT
SITE

53 ACRES AVAILABLE | up to 1,181,040 SF

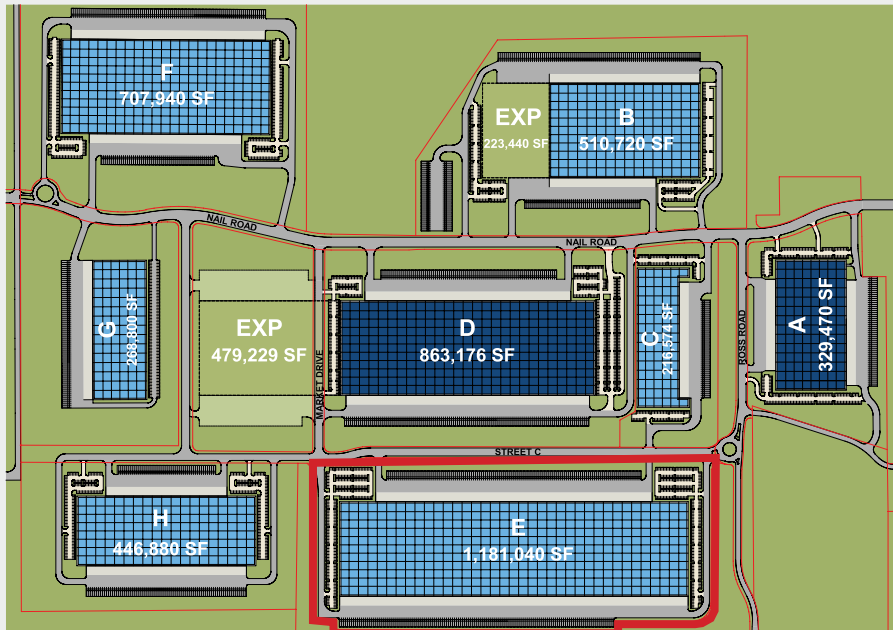
[Church Road & Ross Road, Olive Branch, MS 38654](#)



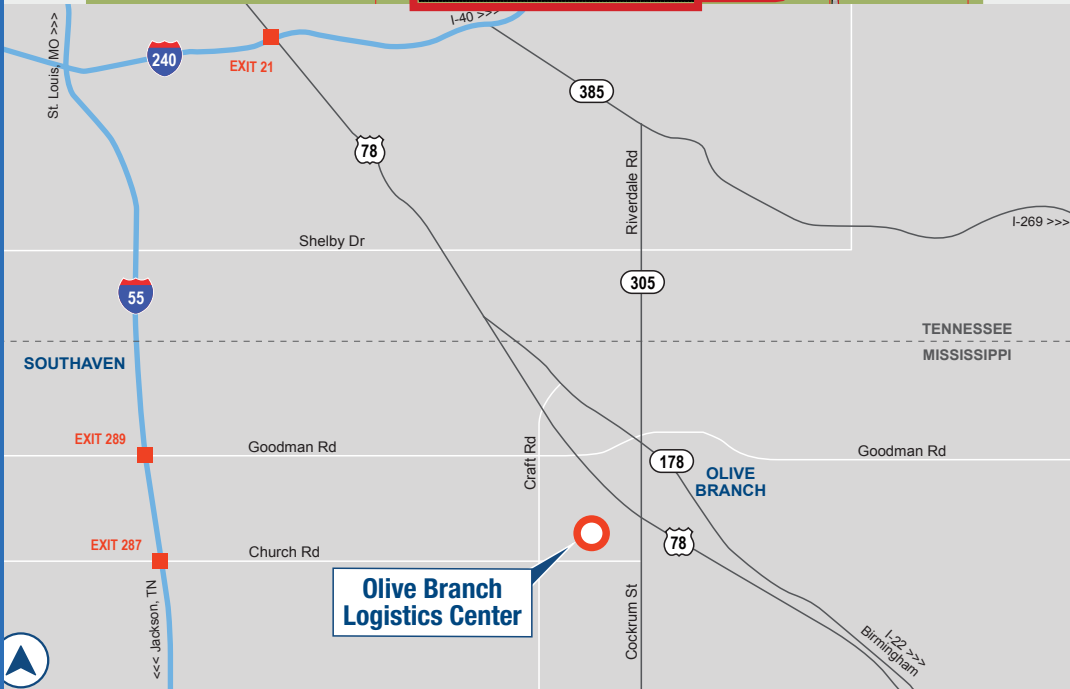
- 12 miles from Memphis International Airport
- 8 miles from Interstate 55
- Located next to FedEx Ground Hub

 **IDI Logistics**
CBRE

PARK INFORMATION



Olive Branch Logistics Center is a master-planned park in Olive Branch, MS. The park is located 12 miles from Memphis International Airport, and 8 miles from Interstate 55. This park can accommodate up to 3,314,850 SF of Class A industrial space.



DRIVING DISTANCES

METRO AREAS

Memphis	10 miles
Little Rock.....	160 miles
Huntsville	190 miles
Jackson.....	200 miles
Nashville.....	220 miles

MAJOR ROADS

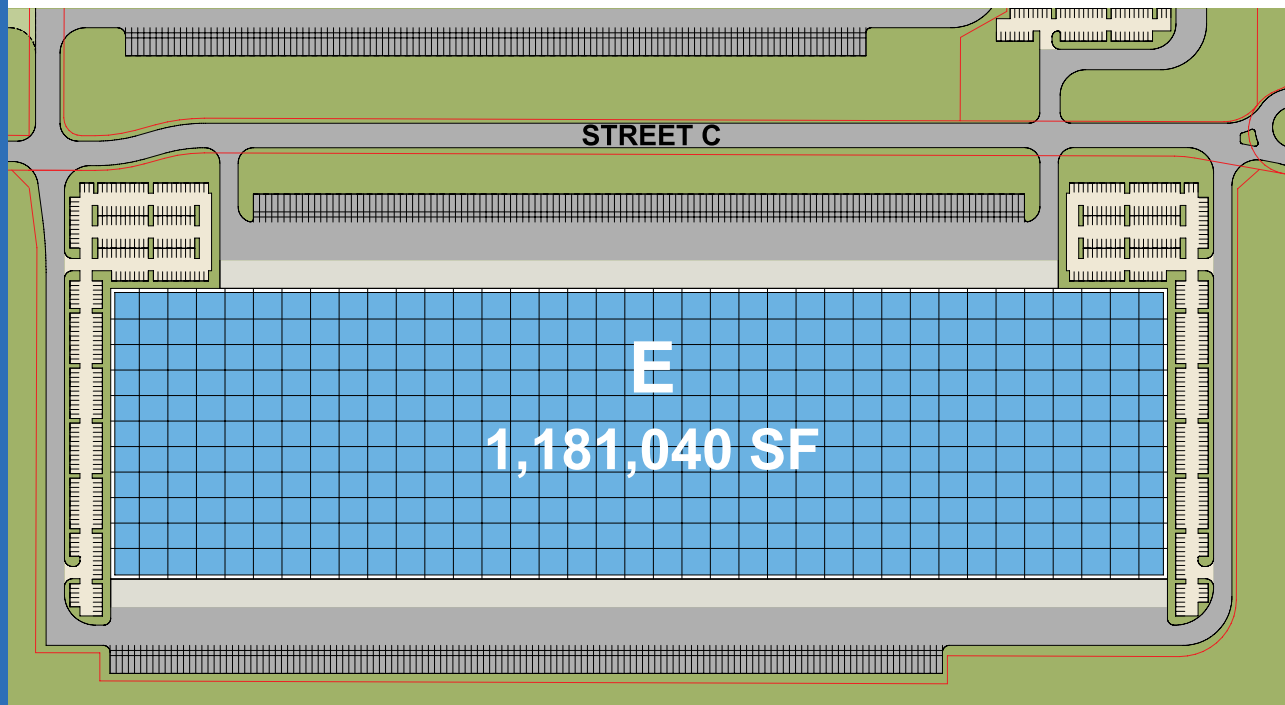
I-22/Route 78	3 miles
I-269	8 miles
I-55	8 miles
I-40	20 miles

POINTS OF INTEREST

Memphis International Airport	12 miles
FedEx World Hub	15 miles
Union Pacific Intermodal.....	22 miles

AVAILABLE SPACE

1,181,040 SQUARE FEET



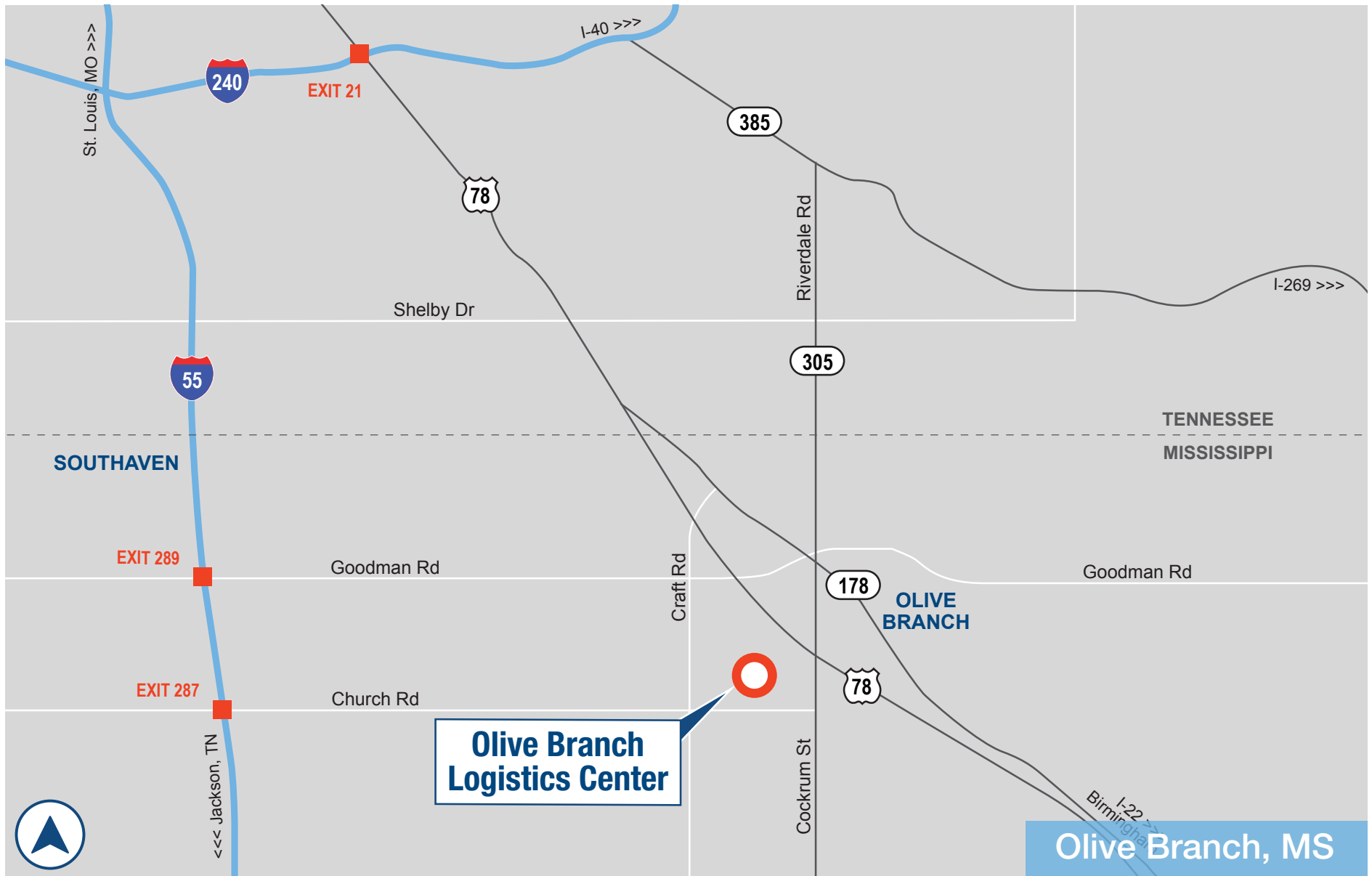
LOT SIZE:	53.7 acres
OFFICE SPACE:	BTS
CLEAR HEIGHT:	40'
DOCK DOORS:	228 (9' x 10')
DRIVE-IN DOORS:	4 (14' x 16')
TRUCK COURT:	130' / 185'
AUTO PARKING:	318 spaces
TRAILER PARKING:	296 stalls
WALL CONSTRUCTION:	Concrete tilt-wall
COLUMN SPACING:	56' x 50'
LOADING BAY SIZE:	56' x 60'
CONFIGURATION:	Cross-dock
ROOF SYSTEM:	60 mil TPO with R-19 Rated Insulation
FLOOR SLAB:	Ductilcrete™ System
FIRE SPRINKLER:	ESFR

TAX ABATEMENTS: Available for Real Property, Personal Property, Freeport Warehouse Exemption and the Potential Foreign Trade Zone Designation

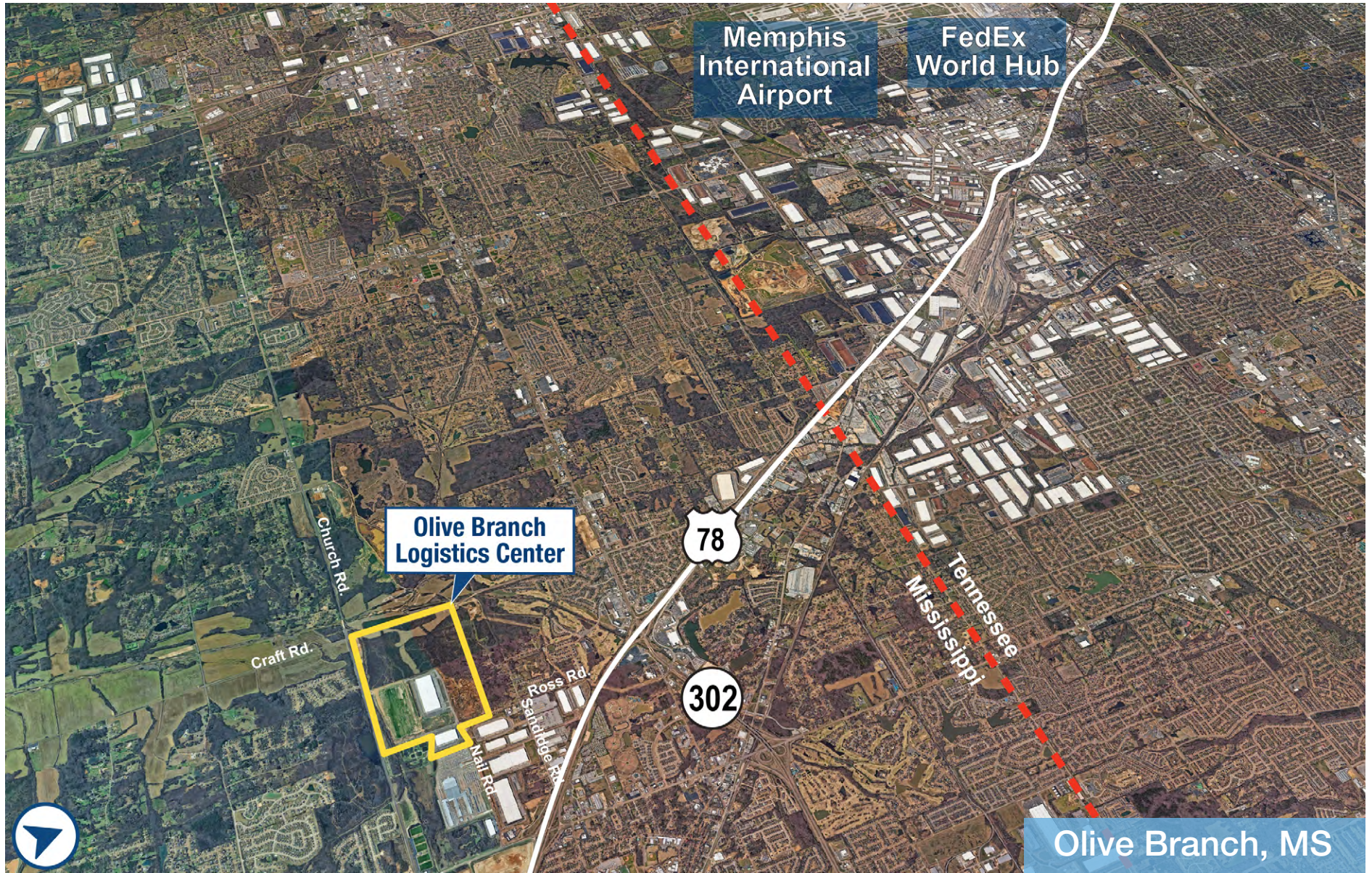
STRONG, DIVERSIFIED WORKFORCE NEARBY

LOCATED NEXT TO FEDEX GROUND HUB

PARK LOCATION



PARK LOCATION



OLIVE BRANCH LOGISTICS CENTER BUILDING E

LAND/
BUILD TO SUIT
SITE

53 ACRES | up to 1,181,040 SF



CBRE

CBRE builds real estate solutions of the future to help our clients, professionals and business partners realize their potential. From instilling confidence in today's decisions to re-imagining tomorrow's spaces, we thrive in complex and ever-changing environments.

For more information, or to set up a tour, please contact:

Patrick Burke, SIOR
+1.901.260.1032
patrick.burke@cbre.com

Jacque Beeson
+1.901.260.1090
jacque.beeson@cbre.com

IDI Logistics

IDI Logistics is a leading developer and manager of logistics real estate in the U.S. Our fully-integrated logistics platform has a long track record of speculative development, build-to-suits and value-add acquisitions.

We are dedicated to serving our customers with exceptional quality and service.

Tim Moore
+1.901.219.2927
tim.moore@idilogistics.com

[Learn More Here](#)

