

ORANGE LOGISTICS CENTER BUILDING 2

AVAILABLE
NOW

FOR LEASE | 99,200 SF AVAILABLE

752 North Poplar Street, Orange, CA 92868



- Approximately 1.5 miles from I-5
- Abundant labor force
- Excellent transportation infrastructure
- Controlled LED exterior lighting

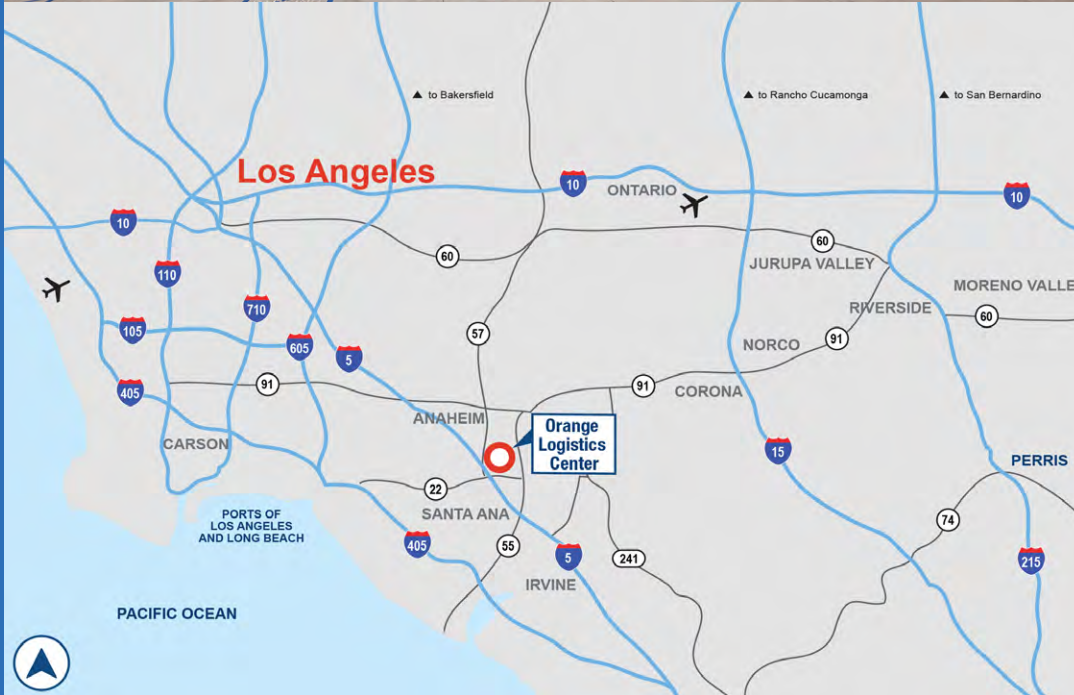
 **IDI Logistics**

 **LEE &
ASSOCIATES**

PARK INFORMATION



Orange Logistics Center, Building 2 offers up to 99,200 square feet of state-of-the-art industrial space located near the intersection of N. Eckhoff Street and W. Oranewood Avenue in Orange, CA - approximately 1.5 miles from I-5.



DRIVING DISTANCES

METRO AREA

Anaheim 5.5 miles
 Long Beach..... 20 miles
 Los Angeles 30 miles
 San Diego 92 miles

INTERSTATE

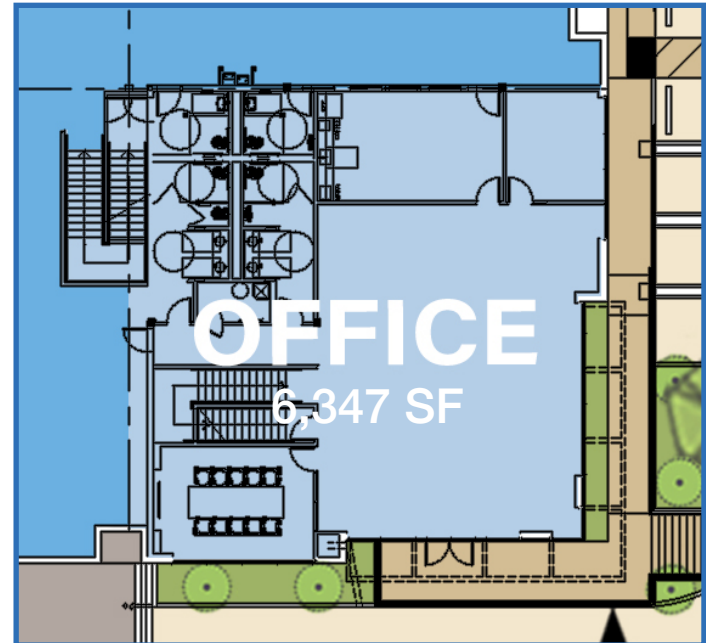
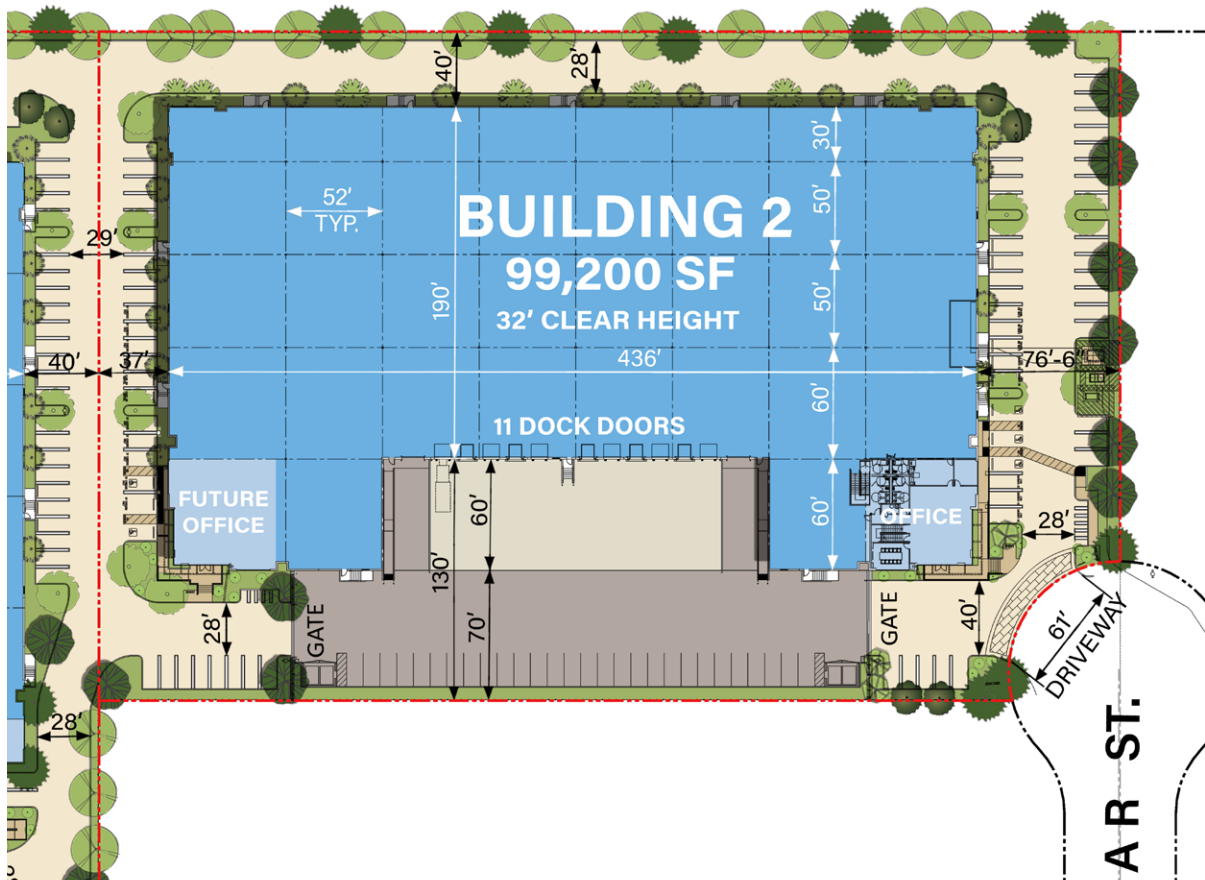
Highway 57 0.5 miles
 I-5 1.5 miles
 Highway 39 8 miles
 Highway 90 9 miles
 I-605 14 miles
 I-10 20 miles
 I-405 22 miles

AIR

John Wayne Airport..... 11 miles
 Ontario Int'l Airport..... 35 miles
 LAX..... 38 miles

AVAILABLE SPACE

99,200 SQUARE FEET

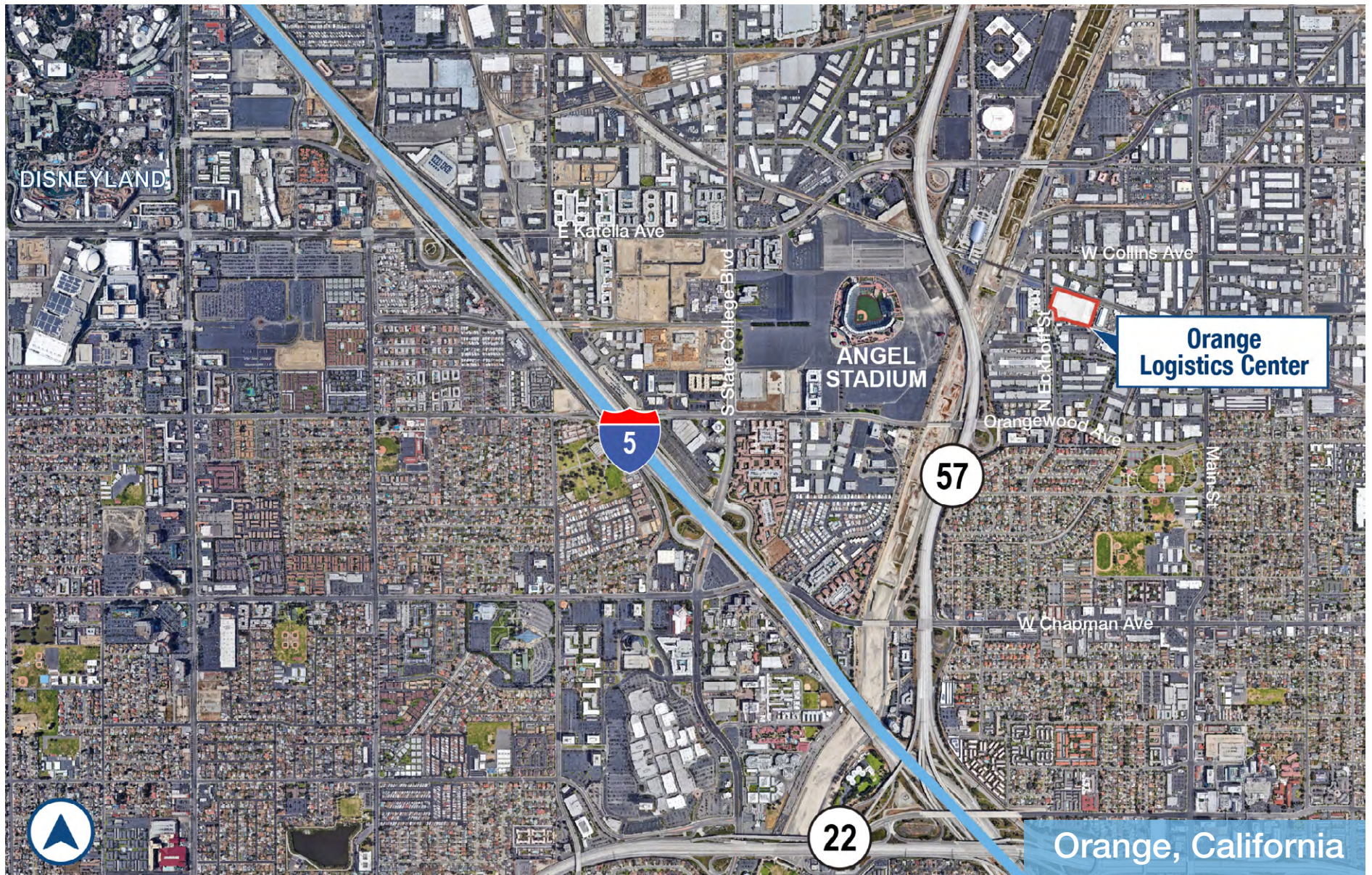


TOTAL BUILDING:	99,200 SF
SPEC OFFICE:	6,347 SF
CLEAR HEIGHT:	32'
DOCKS:	11 (9' x 10')
DRIVE-IN DOORS:	2 (12' x 14')
AUTO PARKING:	101 spaces
TRAILER PARKING:	28 stalls
COLUMN SPACING:	50' x 52'
TRUCK COURT:	130'
FIRE SPRINKLER:	ESFR (k-25)

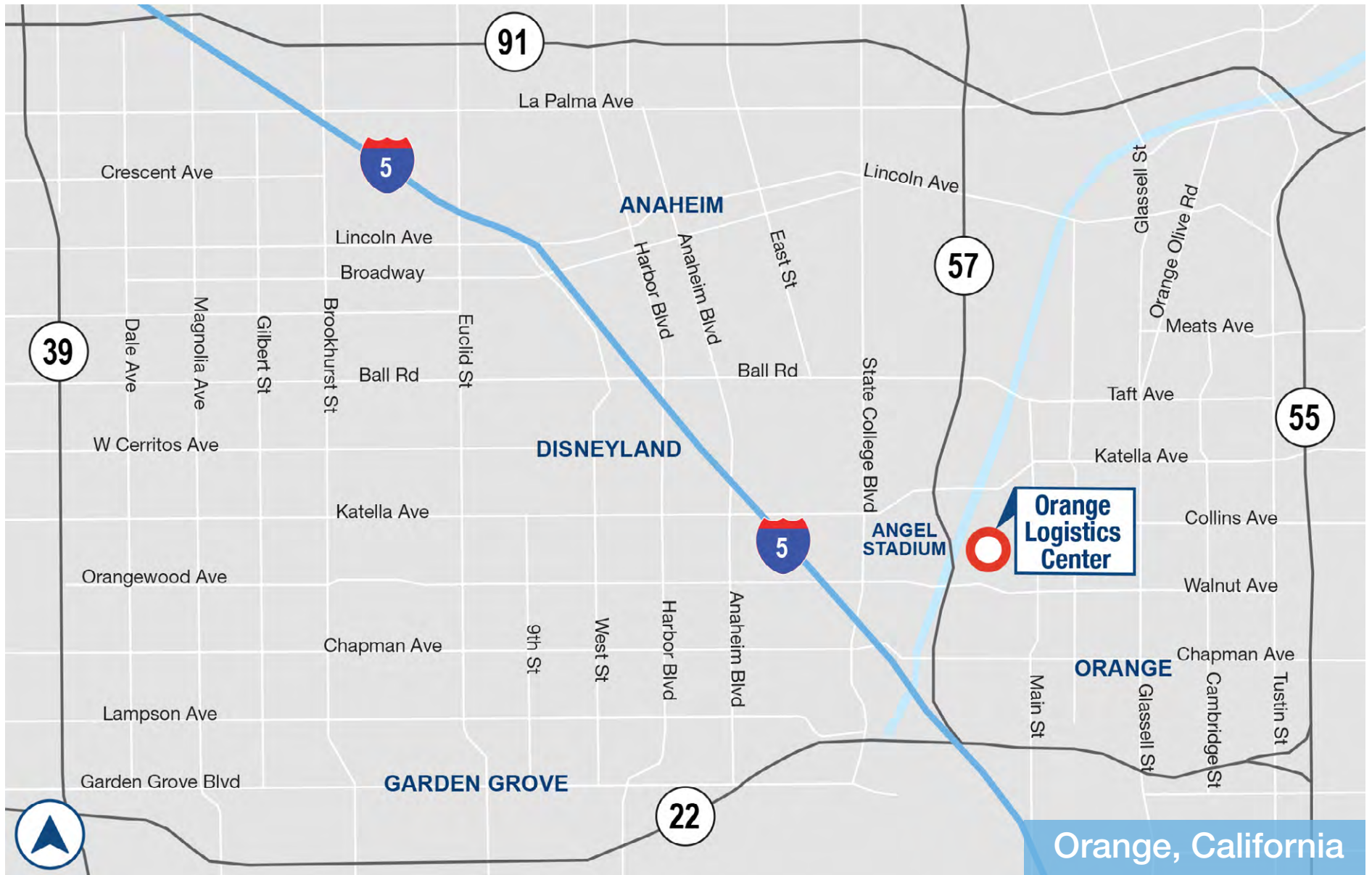
PARK FEATURES

- Abundant labor force
- Close amenities
- Controlled LED exterior lighting
- Energy efficient building
- No assessment bond encumbrances
- Affordable housing in region
- Excellent transportation infrastructure

PARK LOCATION



PARK LOCATION



ORANGE LOGISTICS CENTER BUILDING 2

AVAILABLE
NOW

FOR LEASE | 99,200 SF AVAILABLE



For more information, or to set up a tour, please contact:

Allen C. Buchanan, SIOR
+1.714.564.7104
abuchanan@lee-associates.com
RE Lic. #00870947

Bill Helm
+1.909.373.2901
bheim@lee-assoc.com
RE Lic. #00776174

IDI Logistics

IDI Logistics is a leading developer and manager of logistics real estate in the U.S. Our fully-integrated logistics platform has a long track record of speculative development, build-to-suits and value-add acquisitions.

We are dedicated to serving our customers with exceptional quality and service.

Charlie McPhee
+1.213.334.4801
charlie.mcphee@idilogistics.com

Brandon Dickens
+1.714.915.7678
brandon.dickens@idilogistics.com

[Learn More Here](#)

